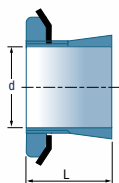


Classification by dimensions – Classement par dimensions
Klassifizierung nach Abmessungen – Classificazione per dimensione
Clasificación por dimensiones – Classificação por dimensões
Классификация по размерам – Klasyfikacja wg wymiarów



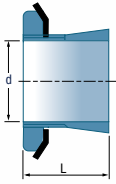
Adapter sleeves / Manchons de serrage / Spannhülsen / Bussole di trazione / Manguitos de apriete / Bucha de fixação / Закрепительные втулки / Tuleje wciągane



d	Reference	L	Kg
17	H204	24	0,04
	H304	28	0,05
20	H205	26	0,07
	H305	29	0,08
	H2305	35	0,09
25	H206	27	0,10
	H306	31	0,11
	H2306	38	0,13
30	H207	29	0,13
	H307	35	0,14
	H2307	43	0,17
35	H208	31	0,17
	H308	36	0,19
	H2308	46	0,22
40	H209	33	0,23
	H309	39	0,25
	H2309	50	0,28
45	H210	35	0,27
	H310	42	0,30
	H2310	55	0,36
50	H211	37	0,31
	H311	45	0,35
	H2311	59	0,42
55	H212	38	0,35
	H312	47	0,39
	H2312	62	0,48
60	H213	40	0,40
	H313	50	0,46
	H2313	65	0,56
60	H214	41	0,59
	H314	52	0,72
	H2314	68	0,90
65	H215	43	0,71
	H315	55	0,83
	H2315	73	1,05
70	H216	46	0,88
	H316	59	1,03
	H2316	18	1,28
75	H217	50	1,02
	H317	63	1,18
	H2317	82	1,45

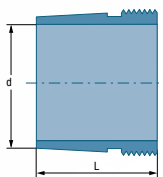
d	Reference	L	Kg
80	H218	52	1,19
	H318	65	1,37
	H2318	86	1,69
85	H219	55	1,37
	H319	68	1,56
	H2319	90	1,92
90	H220	58	1,49
	H320	71	1,69
	H2320	97	2,15
	H3120	76	1,80
100	H222	63	1,93
	H322	77	2,18
	H2322	105	2,74
	H3122	81	2,25
110	H2324	112	3,19
	H3024	72	1,93
	H3124	88	2,64
115	H2326	121	4,60
	H3026	80	2,85
	H3126	92	3,66
125	H2328	131	5,55
	H3028	82	3,16
	H3128	97	4,34
135	H2330	139	6,63
	H3030	87	3,89
	H3130	111	5,52
140	H2332	147	9,14
	H3032	93	5,21
	H3132	119	7,67
150	H2334	154	10,20
	H3034	101	5,99
	H3134	122	8,38
160	H2336	161	11,30
	H3036	109	6,83
	H3136	131	9,50
170	H2338	169	12,60
	H3038	112	7,45
	H3138	141	10,80
180	H2340	176	13,90
	H3040	120	9,19
	H3140	150	12,10





d	Reference	L	Kg
200	H2344H	186	17,00
	H3044H	126	10,30
	H3144	161	14,70
220	H2348H	199	20,00
	H3048H	133	13,20
	H3148H	172	17,60
240	H2352H	211	24,50
	H3052H	145	15,30
	H3152H	190	22,30
260	H2356H	224	28,40
	H3056H	152	17,70
	H3156H	195	25,10
280	H3060H	168	22,80
	H3160H	208	30,20
	H3260H	240	34,10
300	H3064H	171	24,60
	H3164H	226	34,90
320	H3068H	187	28,70
	H3168H	254	50,00
340	H3072H	188	30,50
	H3172	259	56,00
360	H3076H	193	35,80
380	H3080H	210	41,30

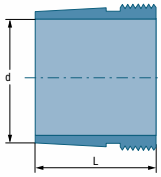
Withdrawal sleeves / Manchons de démontage / Abziehhülsen / Bussole di pressione / Manguitos de desmontaje / Bucha de desmontagem / Стяжные втулки / Tuleje wciskane



d	Reference	L	Kg
35	AH 308	29	0,090
	AH 2308	40	0,128
40	AH 309	31	0,109
	AH 2309	44	0,164
45	AHX 310	35	0,137
	AHX 2310	50	0,209
50	AHX 311	37	0,161
	AHX 2311	54	0,253
55	AHX 312	40	0,189
	AHX 2312	58	0,297
60	AH 313 G	42	0,253
	AH 2313 G	61	0,395
65	AH 314 G	43	0,280
	AHX 2314 G	64	0,466
70	AH 315G	45	0,031
	AHX 2315 G	68	0,534
75	AH 316	48	0,365
	AHX 2316	71	0,597
80	AHX 317	52	0,429
	AHX 2317	74	0,670
85	AHX 318	53	0,461
	AHX 3218	63	0,576
	AHX 2318	79	0,779
90	AHX 349	57	0,532
	AHX 2319	85	0,886
95	AHX 320	59	0,582
	AHX 2130	64	0,650
	AHX 3220	73	0,767
	AHX 2320	90	0,998
100	AHX 3122/100	68	0,760
	AHX 3222/100G	73	1,040
105	AHX 322	63	0,663
	AHX 3122	68	0,760
	AH 24122	82	0,730
	AHX 3222 G	82	1,040
	AHX 2322 G	98	1,350
110	AHX 3024/110	60	0,750
	AHX 3124/110	75	0,950

d	Reference	L	Kg
115	AHX 3024	60	0,750
	AH 24024	73	0,650
	AHX 3124	75	0,950
	AHX 3224 G	90	1,300
	AH 24124	93	1,000
	AHX 2324 G	105	1,600
120	AHX 3026/120	67	0,930
	AHX 3126/120	78	1,080
	AHX 2326/120 G	118	1,970
125	AHX 3026	67	0,930
	AHX 3126	78	1,080
	AH 24026	83	0,880
	AH 24126	94	1,150
	AHX 3226 G	98	1,580
	AHX 2326 G	115	1,970
130	AHX 3028/130	68	1,010
	AHX 3128/130	83	1,280
	AHX 2328/130 G	125	2,330
135	AHX 3028	68	1,010
	AH 24028	83	0,910
	AHX 3128	83	1,280
	AH 24128	99	1,250
	AHX 3228 G	104	1,840
	AHX 2328 G	125	2,330
140	AHX 3030/140	72	1,150
	AHX 3130/140	96	1,790
	AHX 3230/140 G	114	2,220
145	AHX 3030	72	1,150
	AH 24030	90	1,040
	AHX 3130 G	96	1,790
	AHX 3230 G	114	2,220
	AH 24130	115	1,560
	AHX 2330 G	135	2,820
150	AH 3032	77	2,060
	AH 24032	95	2,330
	AH 3132 G	103	3,210
	AH 24132	124	3,000
	AH 3232 G	124	4,080
	AH 2332 G	140	4,720
160	AH 3034	85	2,430
	AH 3134 G	104	3,400
	AH 24034	106	2,800
	AH 24134	125	3,210
	AH 3234 G	134	4,800
	AH 2334 G	146	5,250

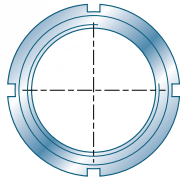




d	Reference	L	Kg
170	AH 3036	92	2,810
	AH 2236 G	105	3,390
	AH 24036	116	3,200
	AH 3136 G	116	3,880
	AH 24136	134	3,750
	AH 3236 G	140	5,320
	AH 2336 G	154	5,830
180	AH 3038 G	96	3,320
	AH 2238 G	112	4,200
	AH 24038	118	3,500
	AH 3138 G	125	4,890
	AH 3238 G	145	5,900
	AH 24138	146	4,280
	AH 2338 G	160	6,630
190	AH 3040 G	102	3,800
	AH 2240	118	4,680
	AH 24040	127	3,930
	AH 3140	134	5,490
	AH 3240	153	6,680
	AH 24140	158	5,100
200	AH 2340	170	7,540
	AOH 3044 G	111	7,290
	AOH 2244	130	9,100
	AOH 24044	138	8,200
	AOH 3144	145	10,400
	AOH 24144	170	10,500
220	AOH 2344	181	13,500
	AOH 3048	116	8,750
	AOH 24048	138	9,290
	AOH 3148	154	12,000
	AOH 24148	180	13,000
AOH 2348	189	15,500	

d	Reference	L	Kg
240	AOH 3052	128	10,700
	AOH 24052 G	162	12,700
	AOH 3152 G	172	15,500
	AOH 24152	202	16,000
	AOH 2352 G	205	18,900
260	AOH 3056	131	12,000
	AOH 24056 G	162	13,700
	AOH 3156 G	175	17,100
	AOH 24156	202	17,300
280	AOH 2356 G	212	21,300
	AOH 3060	145	14,400
	AOH 24060 G	184	16,800
	AOH 3160 G	192	20,400
300	AOH 24160	224	20,800
	AOH 3260 G	228	23,400
	AOH 3064 G	149	15,600
320	AOH 3164 G	209	24,300
	AOH 24164	242	24,200
	AOH 3068 G	162	19,100
340	AOH 3168 G	225	28,300
	AOH 24168	269	29,000
	AOH 3072 G	167	20,400
360	AOH 3172	229	33,000
	AH 24172H	269	30,800
	AOH 3076 G	176	22,700
380	AOH 3080 G	183	26,100

**Locknuts / Ecrous / Muttern / Ghiere /
Tuercas / Porcas / Гайки / Nakrętki**

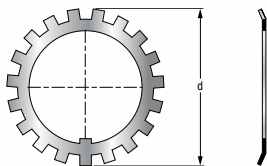


d	Reference	Thread	Kg
10	KM0	M10 x 0.75	0,005
12	KM1	M12 x 1	0,007
15	KM2	M15 x 1	0,010
17	KM3	M17 x 1	0,013
20	KM4	M20 x 1	0,019
25	KM5	M25 x 1,5	0,025
30	KM6	M30 x 1,5	0,043
35	KM7	M35 x 1,5	0,053
40	KM8	M40 x 1,5	0,085
45	KM9	M45 x 1,5	0,120
50	KM10	M50 x 1,5	0,150
55	KM11	M55 x 2	0,160
60	KM12	M60 x 2	0,170
65	KM13	M65 x 2	0,200
70	KM14	M70 x 2	0,240
75	KM15	M75 x 2	0,290
80	KM16	M80 x 2	0,400
85	KM17	M85 x 2	0,450
90	KM18	M90 x 2	0,560
95	KM19	M95 x 2	0,660
100	KM20	M100 x 2	0,700
105	KM21	M105 x 2	0,850
110	KM22	M110 x 2	0,970
115	KM23	M115 x 2	1,010
120	KM24	M120 x 2	1,080
125	KM25	M125 x 2	1,190
130	KM26	M130 x 2	1,250
135	KM27	M135 x 2	1,550
140	KM28	M140 x 2	1,560
145	KM29	M145 x 2	2,000
150	KM30	M150 x 2	2,030
155	KM31	M155 x 2	2,210
160	KM32	M160 x 2	2,590
165	KM33	M165 x 2	2,700

d	Reference	Thread	Kg
170	KM34	M170 x 2	2,800
180	KM35	M180 x 2	3,070
190	KM36	M190 x 2	3,390
200	KM37	M200 x 2	3,690
205	HML41T	Tr205x4	3,430
210	HM42T	Tr210x4	4,750
215	HML43T	Tr215x4	3,720
220	HM3044	Tr220x4	3,090
220	HM44T	Tr220x4	5,350
230	HM46T	Tr230x4	5,800
240	HM3048	Tr240x4	5,160
240	HM48T	Tr240x4	6,200
260	HM3052	Tr2460x4	5,670
250	HM50T	Tr250x4	7,000
260	HM52T	Tr260x4	8,400
280	HM3056	Tr280x4	6,780
280	HM56T	Tr280x4	9,600
300	HM3060	Tr300x4	9,620
300	HM3160	Tr300x4	11,700
320	HM3064	Tr320x5	9,940
320	HM3164	Tr320x5	13,000
340	HM3068	Tr340x5	11,700
340	HM3168	Tr340x5	23,000
360	HM3072	Tr360x5	12,000
360	HM3172	Tr360x5	25,000
380	HM3076	Tr380x5	14,900
380	HM3176	Tr380x5	30,800
400	HM3080	Tr400x5	16,900
420	HM3084	Tr420x5	17,400

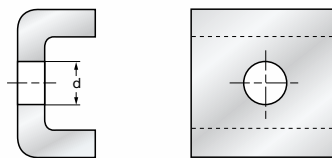


**Lock-washer / Rondelles de blocage / Sicherungsbleche /
Rondelle di sicurezza / Arandela freno / Anilha de pressão /
Стопорные шайбы / Podkładki blokujące**



d	Reference	Kg
10	MB0	0,130
12	MB1	0,200
15	MB2	0,250
17	MB3	0,300
20	MB4	0,400
25	MB5	0,600
30	MB6	0,800
35	MB7	1,100
40	MB8	1,300
45	MB9	1,500
50	MB10	1,600
55	MB11	2,200
60	MB12	2,500
65	MB13	3,000
70	MB14	3,300
75	MB15	3,600
80	MB16	4,600
85	MB17	5,300
90	M18	6,200
95	M19	6,700
100	M20	7,700
105	MB21	8,300
110	MB22	9,400
115	MB23	10,800
120	MB24	10,800
125	MB25	11,800
130	MB26	11,500
140	MB28	14,200
150	MB30	18,000
160	MB32	22,900
170	MB34	24,700
180	MB36	26,800
190	MB38	27,800
200	MB40	29,300
200	MBL40	22,000
200	MB44	35,000
240	MB48	45,000
260	MB52	65,000
280	MB56	105,000

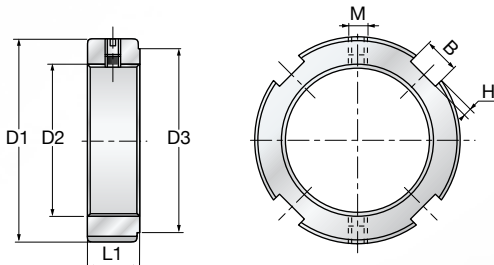
**Locking tabs / Etriers de blocage / Sicherungsbügel /
Staffe di bloccaggio / Brida de bloqueio / Estribo de fixação /
Блокирующие хомуты / Obejmy blokujące**



d	Reference	Kg
7	MS3044	2,100
9	MS3048	2,300
9	MS3052	2,300
9	MS3056	3,000
9	MS3060	3,200
9	MS3064	4,600
9	MS3068	4,600
9	MS3072	5,000
12	MS3076	5,300
12	MS3080	5,300
12	MS3160	3,800
12	MS3164	5,400
14	MS3168	6,700
14	MS3172	6,700

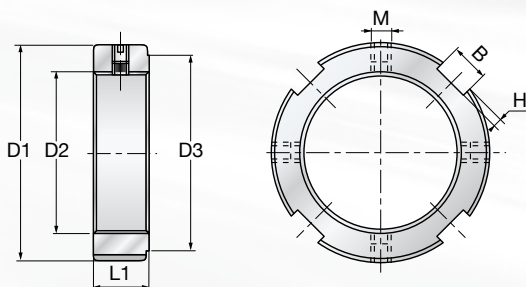
Self-locking precision nuts / Ecrous auto-bloquants de précision / Selbstsichernde Präzisionsmuttern / Ghiere autobloccanti di precisione / Tuercas de precisión / Porcas autobloqueadoras de precisão / Самоблокирующиеся прецизионные гайки / Precyzyjne nakrętki samohamowne

B range / Gamme B / Reihe B / Serie B / Gama B / Gama B / Серия B / Gama B



	D1	D2	D3	L1	M	B	H
B12	22	M12x1	18	8	M4	3	2
B15	25	M15x1	21	8	M4	3	2
B17	28	M17x1	24	10	M5	4	2
B20/1	32	M20x1	28	10	M5	4	2
B20/1,5	32	M20x1,5	28	10	M5	4	2
B25	38	M25x1,5	33	12	M5	5	2
B30	45	M30x1,5	40	12	M5	5	2
B35	52	M35x1,5	47	12	M5	5	2
B40	58	M40x1,5	52	14	M6	6	2,5
B45	65	M45x1,5	59	14	M6	6	2,5
B50	70	M50x1,5	64	14	M6	6	2,5
B55	75	M55x2	68	16	M8	7	3
B60	80	M60x2	73	16	M8	7	3
B65	85	M65x2	78	16	M8	7	3
B70	92	M70x2	85	18	M8	8	3,5
B75	98	M75x2	90	18	M8	8	3,5
B80	105	M80x2	95	18	M8	8	3,5
B85	110	M85x2	100	18	M8	8	3,5
B90	120	M90x2	110	20	M8	10	4
B95	125	M95x2	115	20	M8	10	4
B100	130	M100x2	120	20	M8	10	4
B110	145	M110x2	133	22	M8	12	5
B120	155	M120x2	138	24	M10	12	5
B150	195	M150x2	171	26	M12	14	6
B160	210	M160x3	188	28	M12	16	7
B180	230	M180x3	203	30	M12	18	8
B190	240	M190x3	214	30	M12	18	8

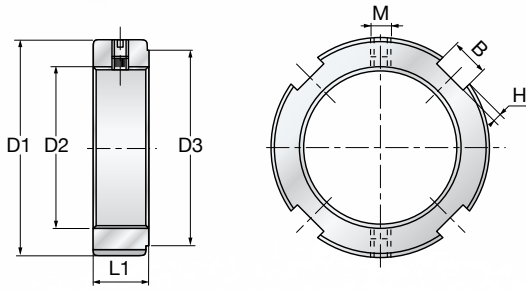
BR range / Gamme BR / Reihe BR / Serie BR / Gama BR / Gama BR / Серия BR / Gama BR



	BR 25	BR 30	BR 35	BR 40	BR 45	BR 50	BR 55	BR 60	BR 65	BR 70	BR 75	BR 80	BR 85	BR 90	BR 95	BR100	BR140
D1	38	45	52	58	65	70	75	80	85	92	98	105	110	120	125	130	180
D2	M25x1,5	M30x1,5	M35x1,5	M40x1,5	M45x1,5	M50x1,5	M55x2	M60x2	M65x2	M70x2	M75x2	M80x2	M85x2	M90x2	M95x2	M100x2	M140x2
D3	33	40	47	52	59	64	68	73	78	85	90	95	100	110	115	120	160
L1	12	12	12	14	14	14	16	16	16	18	18	18	18	20	20	20	26
M	M5	M5	M5	M6	M6	M6	M8	M8	M8	M8	M8	M8	M8	M8	M8	M8	M12
B	5	5	5	6	6	6	7	7	7	8	8	8	8	10	10	10	14
H	2	2	2	2,5	2,5	2,5	3	3	3	3,5	3,5	3,5	3,5	4	4	4	6

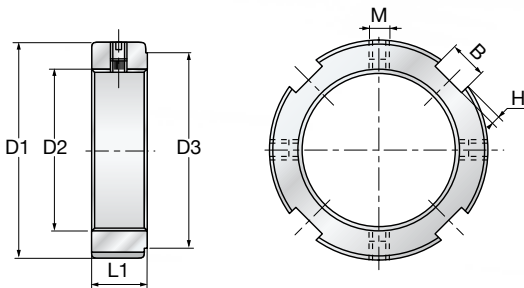


**BP range / Gamme BP / Reihe BP / Serie BP /
Gama BP / Гамма BP / Серия BP / Гамма BP**



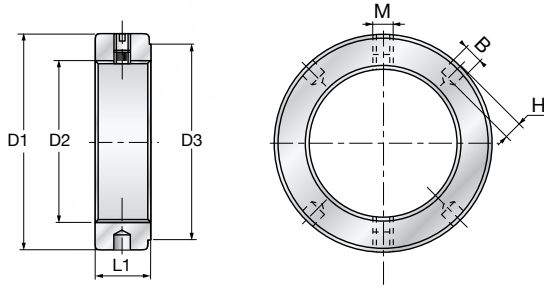
	BP 20/1	BP 20/1,5	BP 25	BP 30	BP 35	BP 40	BP 45	BP 50	BP 55	BP 60	BP 65	BP 70	BP 75	BP 80	BP 85	BP 90	BP 95	BP 100
D1	38	38	45	52	58	62	68	75	88	98	105	110	125	140	150	155	160	160
D2	M20x1	M20x1,5	M25x1,5	M30x1,5	M35x1,5	M40x1,5	M45x1,5	M50x1,5	M55x2	M60x2	M65x2	M70x2	M75x2	M80x2	M85x2	M90x2	M95x2	M100x2
D3	28	28	33	40	47	52	59	64	68	73	78	85	90	95	100	110	115	120
L1	20	20	20	22	22	22	24	25	32	32	32	35	38	38	38	38	38	40
M	M5	M5	M6	M6	M6	M8	M8	M8	M8	M8	M8	M8	M10	M10	M10	M10	M10	M10
B	5	5	5	5	6	6	6	7	8	8	8	8	10	12	12	12	12	12
H	2	2	2	2	2,5	2,5	2,5	3	3,5	3,5	3,5	3,5	4	5	5	5	5	5

**BPR range / Gamme BPR / Reihe BPR / Serie BPR /
Gama BPR / Гамма BPR / Серия BPR / Гамма BPR**



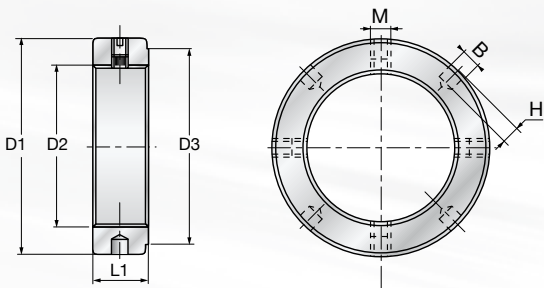
	BPR 20/1	BPR 20/1,5	BPR 25	BPR 30	BPR 35	BPR 40	BPR 45	BPR 50	BPR 55	BPR 60	BPR 65	BPR 70	BPR 75	BPR 80	BPR 85	BPR 90	BPR 95	BPR 100
D1	38	38	45	52	58	62	68	75	88	98	105	110	125	140	150	155	160	160
D2	M20x1	M20x1,5	M25x1,5	M30x1,5	M35x1,5	M40x1,5	M45x1,5	M50x1,5	M55x2	M60x2	M65x2	M70x2	M75x2	M80x2	M85x2	M90x2	M95x2	M100x2
D3	28	28	33	40	47	52	59	64	68	73	78	85	90	95	100	110	115	120
L1	20	20	20	22	22	22	24	25	32	32	32	35	38	38	38	38	38	40
M	M5	M5	M6	M6	M6	M8	M8	M8	M8	M8	M8	M8	M10	M10	M10	M10	M10	M10
B	5	5	5	5	6	6	6	7	8	8	8	8	10	12	12	12	12	12
H	2	2	2	2	2,5	2,5	2,5	3	3,5	3,5	3,5	3,5	4	5	5	5	5	5

**TB range / Gamme TB / Reihe TB / Serie TB /
Гамма TB / Гамма TB / Серия TB / Гамма TB**



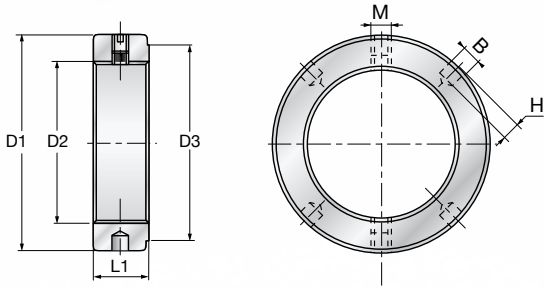
	TB 20/1	TB 20/1,5	TB 25	TB 30	TB 35	TB 40	TB 45	TB 50	TB 55	TB 60	TB 65	TB 70	TB 75	TB 80	TB 85	TB 90	TB 95	TB100
D1	32	32	38	45	52	58	65	70	75	80	85	92	98	105	110	120	125	130
D2	M20x1	M20x1,5	M25x1,5	M30x1,5	M35x1,5	M40x1,5	M45x1,5	M50x1,5	M55x2	M60x2	M65x2	M70x2	M75x2	M80x2	M85x2	M90x2	M95x2	M100x2
D3	28	28	33	40	47	52	59	64	68	73	78	85	90	95	100	110	115	120
L1	10	10	12	12	12	14	14	14	16	16	16	18	18	18	18	20	20	20
M	M5	M5	M5	M5	M5	M6	M6	M6	M8	M8	M8	M8	M8	M8	M8	M8	M8	M8
B	5	5	5	5	5	6	6	6	6	6	6	8	8	8	8	8	8	8
H	3,5	3,5	4	4,5	5	5,5	6	6	6	6	6	7	7	7	8	8	8	8

**TBR range / Gamme TBR / Reihe TBR / Serie TBR /
Гамма TBR / Гамма TBR / Серия TBR / Гамма TBR**



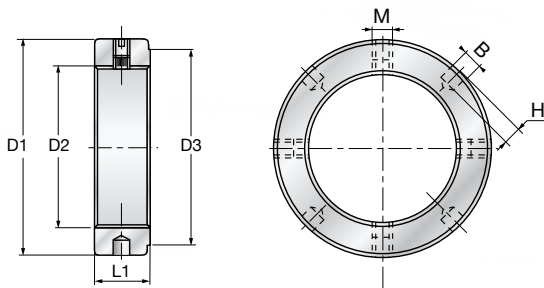
	TBR 25	TBR 30	TBR 35	TBR 40	TBR 45	TBR 50	TBR 55	TBR 60	TBR 65	TBR 70	TBR 75	TBR 80	TBR 85	TBR 90	TBR 95	TBR 100
D1	38	45	52	58	65	70	75	80	85	92	98	105	110	120	125	130
D2	M25x1,5	M30x1,5	M35x1,5	M40x1,5	M45x1,5	M50x1,5	M55x2	M60x2	M65x2	M70x2	M75x2	M80x2	M85x2	M90x2	M95x2	M100x2
D3	33	40	47	52	59	64	68	73	78	85	90	95	100	110	115	120
L1	12	12	12	14	14	14	16	16	16	18	18	18	18	20	20	20
M	M5	M5	M5	M6	M6	M6	M8	M8	M8	M8	M8	M8	M8	M8	M8	M8
B	5	5	5	6	6	6	6	6	6	8	8	8	8	8	8	8
H	4	4,5	5	5,5	6	6	6	6	6	7	7	7	8	8	8	8

**TBP range / Gamme TBP / Reihe TBP / Serie TBP /
Гамма TBP / Гамма TBP / Серия TBP / Гамма TBP**



	TBP 20/1	TBP 20/1,5	TBP 25	TBP 30	TBP 35	TBP 40	TBP 45	TBP 50	TBP 55	TBP 60	TBP 65	TBP 70	TBP 75	TBP 80	TBP 85	TBP 90	TBP 95	TBP100
D1	38	38	45	52	58	62	68	75	88	98	105	110	125	140	150	155	160	160
D2	M20x1	M20x1,5	M25x1,5	M30x1,5	M35x1,5	M40x1,5	M45x1,5	M50x1,5	M55x2	M60x2	M65x2	M70x2	M75x2	M80x2	M85x2	M90x2	M95x2	M100x2
D3	28	28	33	40	47	52	59	64	68	73	78	85	90	95	100	110	115	120
L1	20	20	20	22	22	22	24	25	32	32	32	35	38	38	38	38	38	40
M	M5	M5	M6	M6	M6	M8	M8	M8	M8	M8	M8	M8	M10	M10	M10	M10	M10	M10
B	5	5	5	5	5	6	6	6	6	8	8	8	8	8	8	8	8	8
H	3,5	3,5	4	4,5	5	5,5	6	6	6	6	6	7	7	7	8	8	8	8

**TBPR range / Gamme TBPR / Reihe TBPR / Serie TBPR /
Гамма TBPR / Гамма TBPR / Серия TBPR / Гамма TBPR**



	TBPR 20/1	TBPR 20/1,5	TBPR 25	TBPR 30	TBPR 35	TBPR 40	TBPR 45	TBPR 50	TBPR 55	TBPR 60	TBPR 65	TBPR 70	TBPR 75	TBPR 80	TBPR 85	TBPR 90	TBPR 95	TBPR100
D1	38	38	45	52	58	62	68	75	88	98	105	110	125	140	150	155	160	160
D2	M20x1	M20x1,5	M25x1,5	M30x1,5	M35x1,5	M40x1,5	M45x1,5	M50x1,5	M55x2	M60x2	M65x2	M70x2	M75x2	M80x2	M85x2	M90x2	M95x2	M100x2
D3	28	28	33	40	47	52	59	64	68	73	78	85	90	95	100	110	115	120
L1	20	20	20	22	22	22	24	25	32	32	32	35	38	38	38	38	38	40
M	M5	M5	M6	M6	M6	M8	M8	M8	M8	M8	M8	M8	M10	M10	M10	M10	M10	M10
B	5	5	5	5	5	6	6	6	6	8	8	8	8	8	8	8	8	8
H	3,5	3,5	4	4,5	5	5,5	6	6	6	6	6	7	7	7	8	8	8	8

